

NOTICE ON KOBE PORT PASSAGE (-12 M) ADDITIONAL DREDGING WORK

The following passage (-12 M) dredging work will be conducted at Kobe Port.

All vessels passing nearby are requested to give a wide berth and navigate with caution.

Contact Information	
Ordering party:	Office of Daiichi Kensetsu Management Supervisor, Kobe Port Office of Kinki Regional Development Bureau, Ministry of Land, Infrastructure, Transport and Tourism
Constructor:	JV Kobe Port Field Office, Wakachiku/Aomi/Homna Joint Venture Wataru Shinohara, Manager
	Tel.: 078-331-6703 Tel.: 050-5526-5570 Tel.: 090-4564-5253

1. Work Period

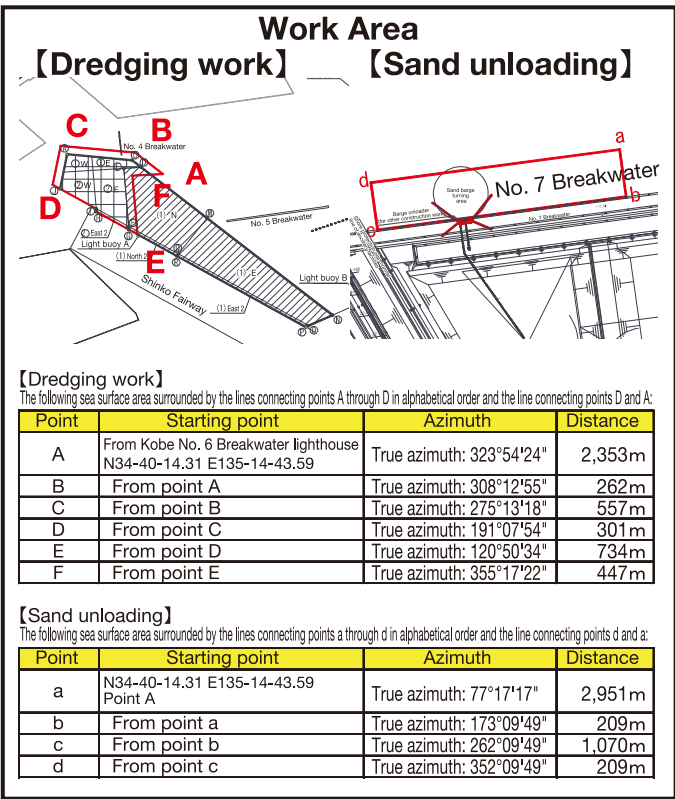
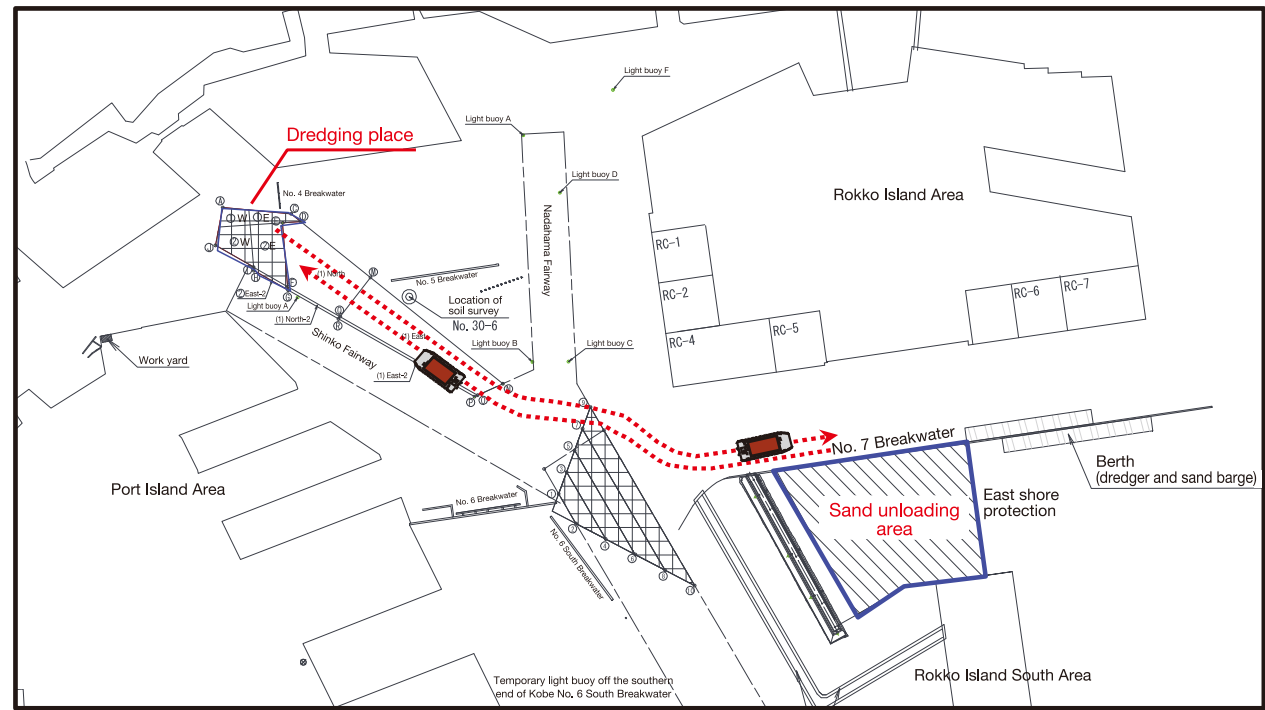
From March 1
through August 31, 2022
(reserved days included)
Work time: From sunrise
to sunset

Month Type of work	2022								Remarks
	Feb. 10 20	Mar. 10 20	Apr. 10 20	May 10 20	June 10 20	July 10 20	Aug. 10 20	Sept.	
Preparatory work									
Dredging work									
Sand barge transportation									
Sand unloading									
Sweeping									Reserved days included

2. Contents of Work

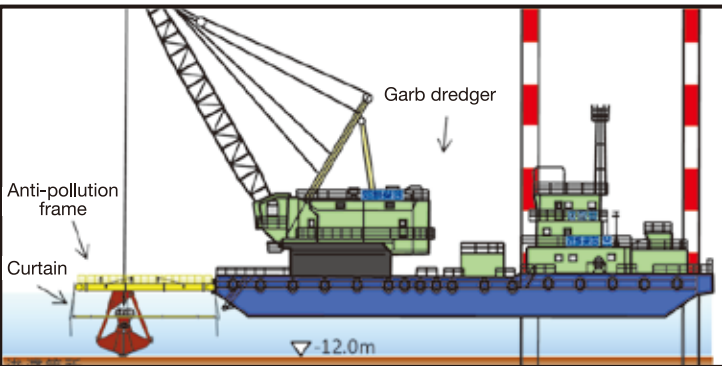
The following works will be conducted in the work area as shown below.

Dredging work, sand barge transportation, and sand unloading



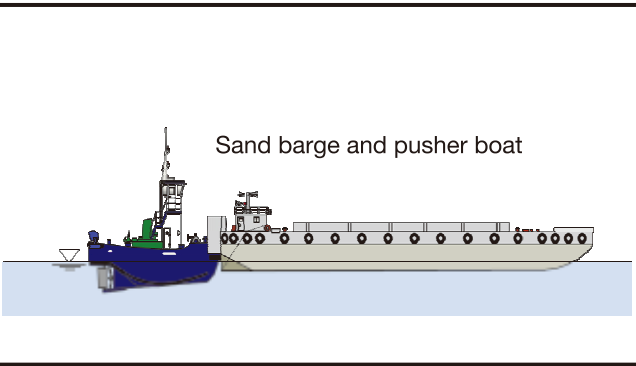
3. Work Overview

① Dredging



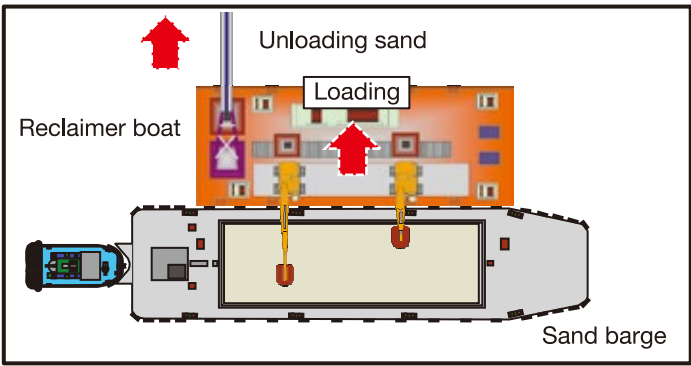
①A grab dredger will conduct dredging work. During dredging operations, an anti-pollution frame will be installed to prevent the spread of pollution.

② Sand barge transportation



②A sand barge and a pusher boat will transport dredged sand through the above transportation route.

③ Sand unloading



③A reclaimer boat will lift the sand loaded on the sand barge, and the sand will be discharged through a sand discharge pipe to the sand unloading area.

4. Safety Measures

- Watch boats hoisting the watch boat indications and warning flag
① will be allocated for the safety of other vessels passing the work area.
- Two to four watch boats will be deployed to respond to two vessels that may approach simultaneously, as many vessels will be navigating during the work.
- Each workboat will display the lighting and object specified by the Act for Prevention Collisions at Sea along with a workboat flag ②.
- During the work period, information and warnings will be provided to draw the attention of vessels passing nearby, provide information to them, and work on maintaining marine traffic safety.
- The work cancellation criteria are shown in the figure ③ on the right-hand side.
- Each workboat berthing at night will be moored near the work area at a position that will not interfere with the navigation of other vessels. Furthermore, the workboat will illuminate itself to tell its existence as long as it does not interfere with the navigation of other vessels.

① Watch boat indications and warning flag



Warning flag



Watch boat indication
(red letters on white background)

② Workboat flag



③ Work cancellation criteria

Wind velocity	10 m/sec. or more (average wind velocity for 10 min.)
Wave height	1.0 m or more (significant wave height)
Visibility	2,000 m or less
Abnormal weather	• Abnormal weather conditions are expected, such as typhoons and storm surges. • A tsunami advisory or warning is issued. • A recommendation is issued by the Port Master. • The person in charge of the worksite judges that it is dangerous to continue the work.