

NOTICE ON REMOVAL OF NO. 5 BREAKWATER (SECTION 1 AND 2), INCLUDING UNWANTED MATERIALS, AT KOBE PORT

Contact Information

Ordering party: Kobe Port Office of Kinki Regional Development Bureau, Ministry of Land, Infrastructure, Transport and Tourism Tel.: 078-331-6703

Contractor: Removal of No. 5 breakwater (section 1), including unwanted materials, at Kobe port
Penta-Ocean and Aomi Specified Construction Joint Venture
Tel.: 078-335-7883

Manager: Maruko Osamu
In charge: Yoshida Genki
Mobile phone: 080-2030-1250
Mobile phone: 090-5998-1094

Removal of No. 5 breakwater (section 2), including unwanted materials, at Kobe port
Toa and Fudo Tetra Specified Construction Joint Venture
Tel.: 078-515-6275

Manager: Nishisako Akinori
In charge: Nakagawa Katsuaki
Mobile phone: 090-4394-9957
Mobile phone: 080-1567-3711

Inquiry on work information: Management Office of Navigational Safety Information on Kobe Port Marine Construction Work

Tel.: 078-335-8025

The removal of work gantry and steel pipe pile will be conducted on the east side of the No. 5 breakwater at Kobe Port. The safety measures specified below will be taken during the work period, and all vessels passing nearby are requested to give a wide berth and navigate with caution.

1. Work period: From July 10 through August 20, 2020 (reserved days included)

Type of work	2020						Remarks
	July			August			
	10	20	31	10	20	31	
Temporary installation work							
Work gantry removal	██████████						Section 1
Steel pipe pile removal			██████████				Section 2
Sweeping				██████████			Reserved days included

Work Area (Temporary installation work)

Point	Reference point	Azimuth	Distance
Point A	From base point	341° 01'	2,051m
Point B	From point A	71° 01'	487m
Point C	From point B	179° 28'	522m
Point D	From point C	251° 05'	321m

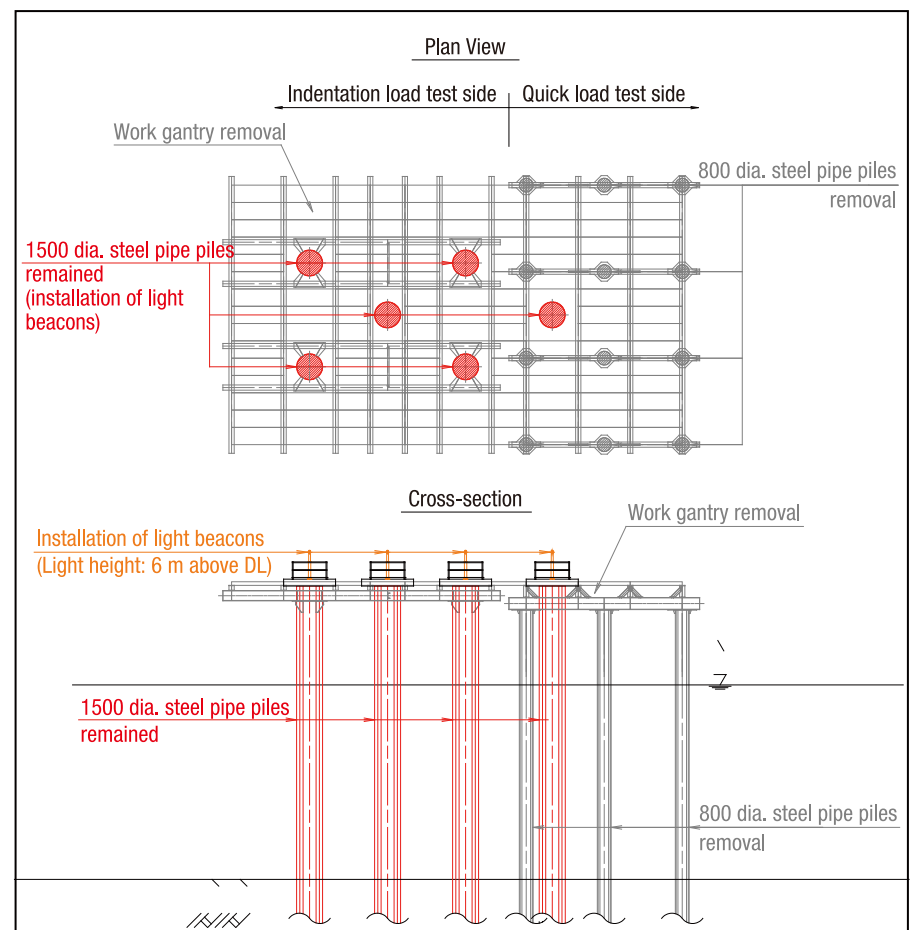
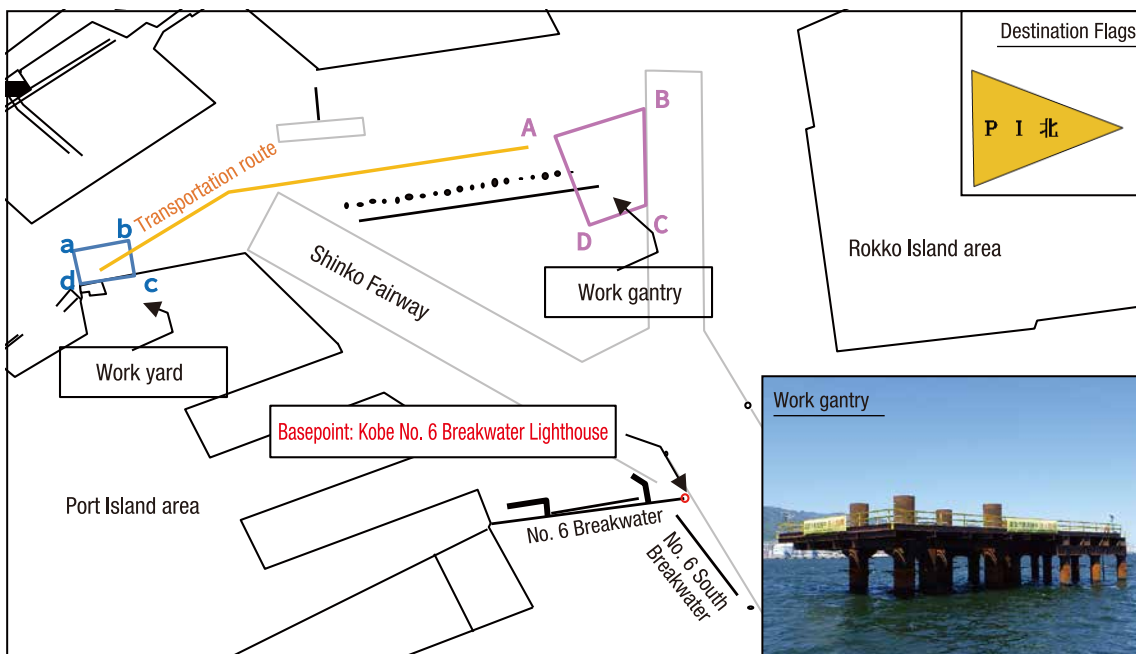
Base point: Kobe No.6 Breakwater Lighthouse

Work Area (Work yard)

Point	Reference point	Azimuth	Distance
Point a	From base point	292° 30'	3,527m
Point b	From point a	79° 12'	300m
Point c	From point b	169° 12'	200m
Point d	From point c	259° 12'	300m

Base point: Kobe No.6 Breakwater Lighthouse

2. Work Area

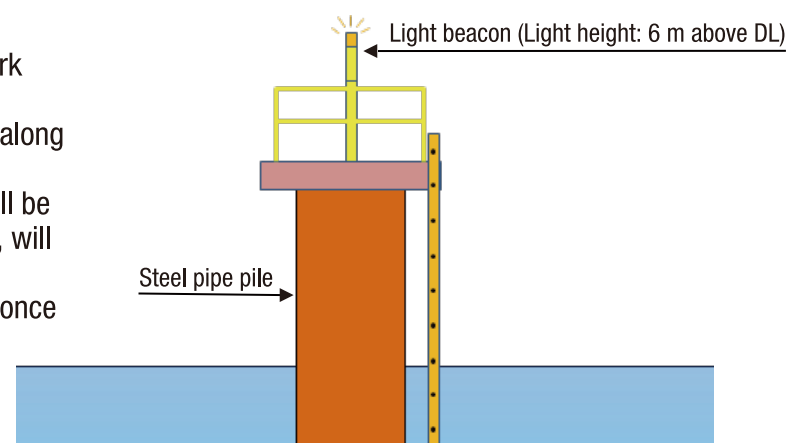


3. Contents of Work

A floating crane will be used to remove the work gantry and pull out the steel pipe piles. The steel materials of the removed work gantry and the steel pipe piles will be marine transported by the floating crane to the work yard and landed.

4. Safety Measures

- Each workboat will hoist the house flags of the contractors and a destination flag to indicate the destination of the workboat in addition to displaying a lamp light and object specified by the Prevention of Collision at Sea Act.
- Two watch boats (one is equipped with international VHF transceiver) will be stationed around the work area to draw the attention of vessels passing nearby and for the maintenance of marine traffic safety.
- Each workboat berthing at night will turn on lights specified by the Prevention of Collision at Sea Act, along with proper lighting and a marker buoy at the anchoring position.
- When the work gantry is removed, the light beacon on each of the four corners of the gantry crane will be moved to the top of the steel pipe piles. (Six light beacons in total, including two newly installed ones, will be placed.)
Each light will be at least 6.0 m above datum line (DL) (including installation stands) and flash yellow once at 3-second intervals (in synchronization) at 14 candelas, with a light reaching distance of 5.5 km.
- For details of this work, scan the QR code below on the right-hand side.



Sketch of steel pipe pile removal

House Flags

[Section 1]

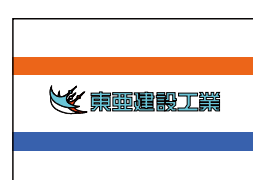


Penta-Ocean Construction Co., Ltd.



Aomi Construction Co., Ltd.

[Section 2]



Toa Construction Co., Ltd.



Fudo Tetra Construction Co., Ltd.



Management Office of Navigational Safety Information on Kobe Port Marine Construction Work Website