

NOTICE ON CONSTRUCTION OF MAIN TOWER FOUNDATIONS FOR KOBE PORT WATERFRONT ROAD (OSAKA BAY SHORE ROAD WEST EXTENSION)

Constructor: [2P Main Tower] Goyo, Wakachiku, and Ohmoto Specified Construction Joint Venture (Goyo JV)
 [3P Main Tower] Toa, Fudo Tetra, and Aomi Specified Construction Joint Venture (Toa JV)
 Ordering party: Kobe Port Office of Kinki Regional Development Bureau,
 Ministry of Land, Infrastructure, Transport and Tourism

Inquiry: Management Office of Navigational
 Safety Information on Kobe Port Marine
 Construction Work
 [Website: <http://www.kobe-kaibouken.or.jp>]



Inquiry QR code
 Management Office of
 Navigational Safety
 Information on Kobe Port
 Marine Construction Work

Structure removal work, incidental work, and steel pipe sheet pile/steel pipe pile driving work will be carried out for the main tower foundations for the Kobe Port Waterfront Road (Osaka Bay Shore Road West Extension). The safety measures specified below will be taken during the construction work period. However, all vessels passing nearby are requested to give a wide berth and navigate with caution.

1. Work period and time

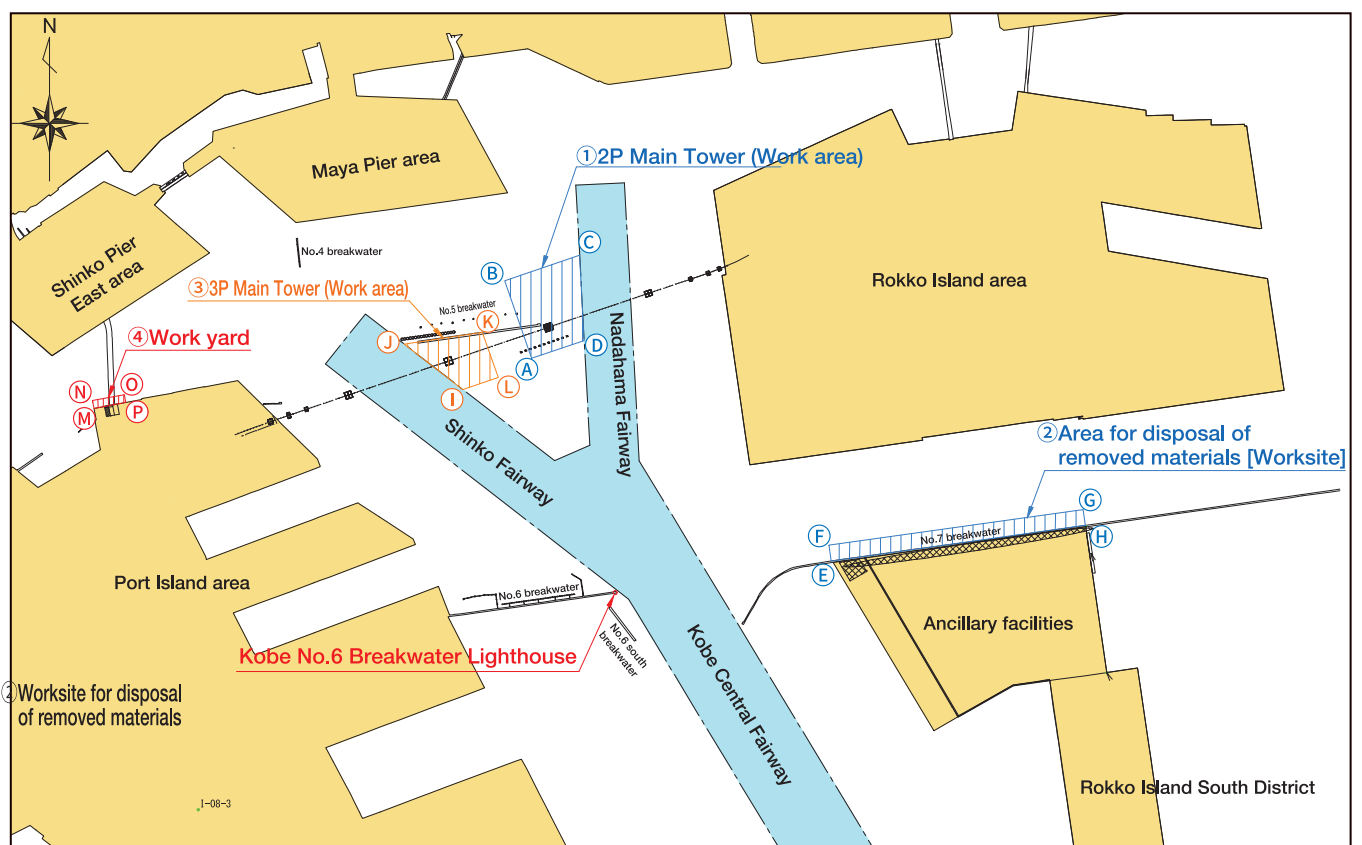
Work period: From April 1, 2026 through December 31, 2027
 Work time: From sunrise to sunset.

Type of work	2026										2027										
	Apr.	May	Jun.	Jul.	Aug.	Sep.	Oct.	Nov.	Dec.	Jan.	Feb.	Mar.	Apr.	May	Jun.	Jul.	Aug.	Sep.	Oct.	Nov.	Dec.
Preparatory work																					
Goyo JV																					
2P Main Tower	Structure removal/Incidental work																				
	Steel pipe sheet pile/steel pipe pile driving work																				
Toa JV																					
3P Main Tower	Survey work																				
	Steel pipe sheet pile/steel pipe pile driving work																				

2. Work area

Basepoint	Kobe No. 6 Breakwater Lighthouse 34° 40' 14.2" N 135° 14' 43.1" E			
Location	Point	Azimuth	Distance	
Goyo JV	① 2P Main Tower Work area	Point A	From basepoint 340° 42'	1,558m
		Point B	From point A 341° 1'	515m
		Point C	From point B 71° 1'	490m
		Point D	From point C 177° 0'	536m
	② Worksite for disposal of removed materials	Point E	From basepoint 81° 32'	1,350m
		Point F	From point E 352° 7'	100m
		Point G	From point F 81° 54'	1585m
		Point H	From point G 172° 7'	100m
Toa JV	③ 3P Main Tower Work area	Point I	From basepoint 323° 34'	1,584m
		Point J	From point I 308° 13'	461m
		Point K	From point J 81° 26'	489m
		Point L	From point K 161° 1'	299m
Common	④ Work yard	Point M	From basepoint 289° 45'	3,420m
		Point N	From point M 349° 45'	50m
		Point O	From point N 79° 23'	200m
		Point P	From point O 169° 45'	50m

The work will be conducted in the sea area surrounded by the lines connecting the above points in sequence.

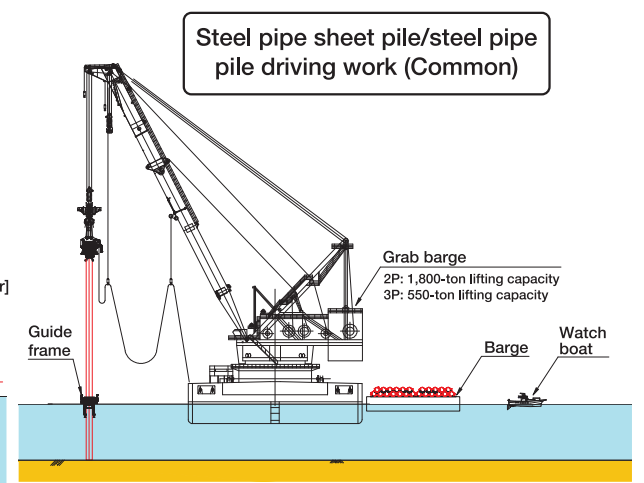
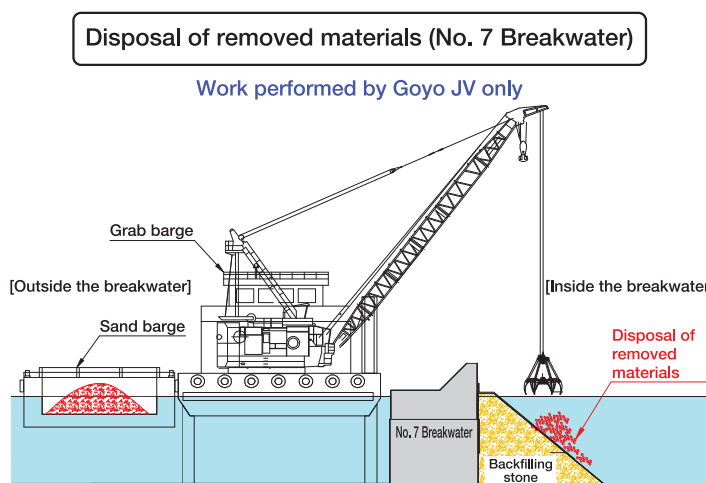
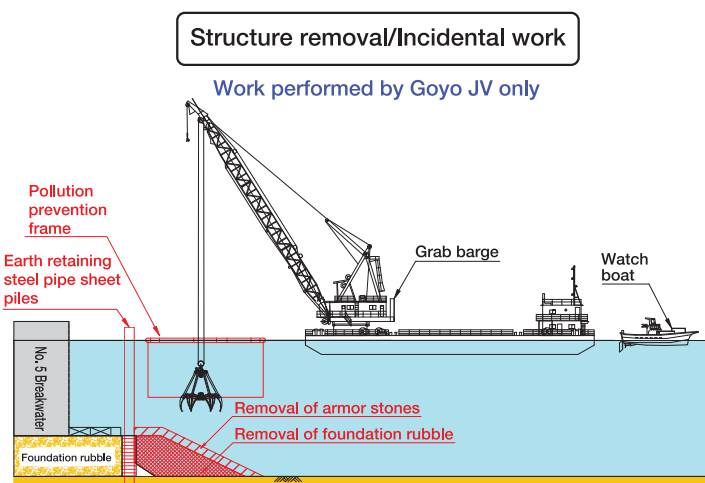


3. Work method

1) Removal of the breakwater mound and driving of earth retaining steel pipe sheet piles will be performed by a floating crane at the 2P Main Tower.

2) Removed rubble, etc., will be disposed of inside the No. 7 Breakwater by a floating crane.

3) Driving steel pipe sheet piles and steel pipe piles, which serve as foundations for the 2P and 3P Main Towers, will be carried out by a floating crane.



4. Safety measures

- Each workboat will display a light and object specified by the Act for Preventing Collisions at Sea along with the flag ① representing the Joint Venture.
- During diving work, the diver's boat will hoist international signal flag A ②.
- One watch boat will be deployed during 2P and 3P works to alert other vessels and ensure vessel traffic safety. In addition, the watchboat will always be equipped with an international VHF radio. The watch boat will hoist a watch boat flag ③.
- The material transport boat (sand barge) will hoist the destination flag ④.
- When anchoring at night in the work area, all boats will display a light required by the Act for Preventing Collisions at Sea and set up a display buoy and light at the anchoring position.
- For more information on this work, scan the QR code in the upper right corner of this notice.

① Workboat flag



Goyo JV
 [Lead partner]

③ Watch boat flag



② International signal flag A



④ Destination flag



Toa JV
 [Lead partner]

