

NOTICE ON WORK FOR POLLUTION PREVENTION FILM INSTALLATION AND OTHER WORK OFF ROKKO ISLAND, KOBE AREA SECTION 6 OF HANSHIN PORT

Contractor : Goyo, Aomi and Ohmoto Specified Construction Joint Venture

Tel.: 078-855-2255

Inquiry : Management Office of Navigational Safety Information on Kobe Port Marine Construction Work

Tel.: 078-335-8025

[Website: <http://www.kobe-harbor.or.jp>]

Ordering party : Kobe Port Office of Kinki Regional Development Bureau, Ministry of Land, Infrastructure, Transport and Tourism

Tel.: 078-331-6703

Inquiry QR code
Management Office of Navigational Safety
Information on Kobe Port Marine Construction Work



The following series of work will be carried out in Kobe Area Section 6 of Hanshin Port: Light buoy and maker light installation and pollution prevention film installation. All vessels passing nearby are requested to give a wide berth and navigate with caution.

1. Work Period and Time

- December 23, 2019 through March 30, 2020
- Daytime work: Sunrise to sunset

2. Contents of Work

The following work will be conducted in the work area as shown on the right.

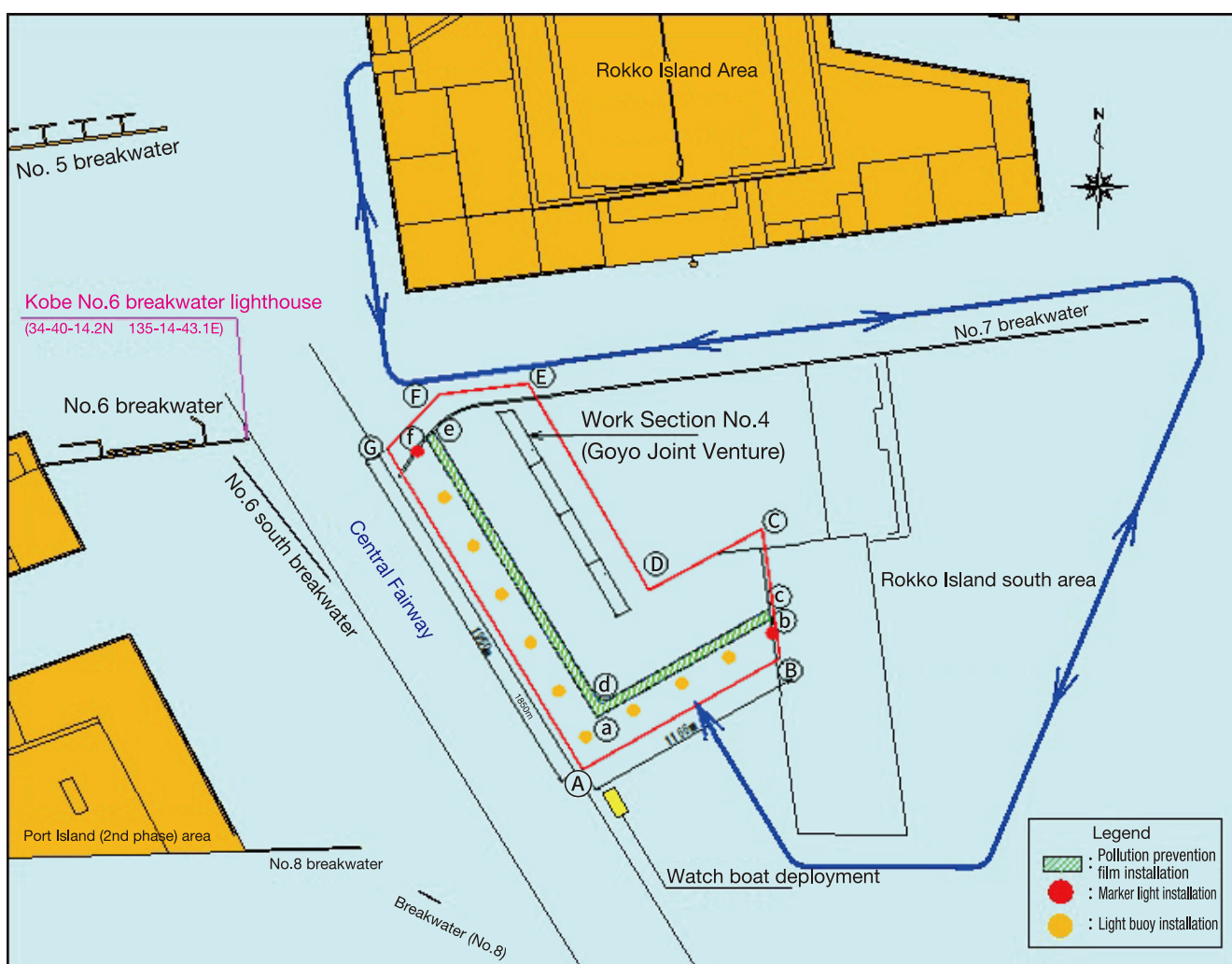
- Light buoy and maker light installation
- Pollution prevention film installation

Type of work	2019					2020			Remarks
	Aug.	Sept.	Oct.	Nov.	Dec.	Jan.	Feb.	Mar.	
1) Light buoy and maker light installation									
2) Pollution prevention film installation									
Sweeping									

[Work Area]

Basepoint	Kobe No. 6 Breakwater Lighthouse 34-40-14.2N 135-14-43.1E		
Point	Azimuth	Distance	Remarks
Point A	From basepoint 135° 19' 31"	2,415m	
Point B	From point A 59° 44' 56"	1,166m	
Point C	From point B 351° 50' 9"	660m	
Point D	From point C 239° 58' 45"	634m	
Point E	From point D 329° 54' 22"	1,283m	
Point F	From point E 261° 50' 9"	365m	
Point G	From point F 231° 23' 5"	448m	

The work will be conducted in the sea area surrounded by the lines connecting the above points in sequence.

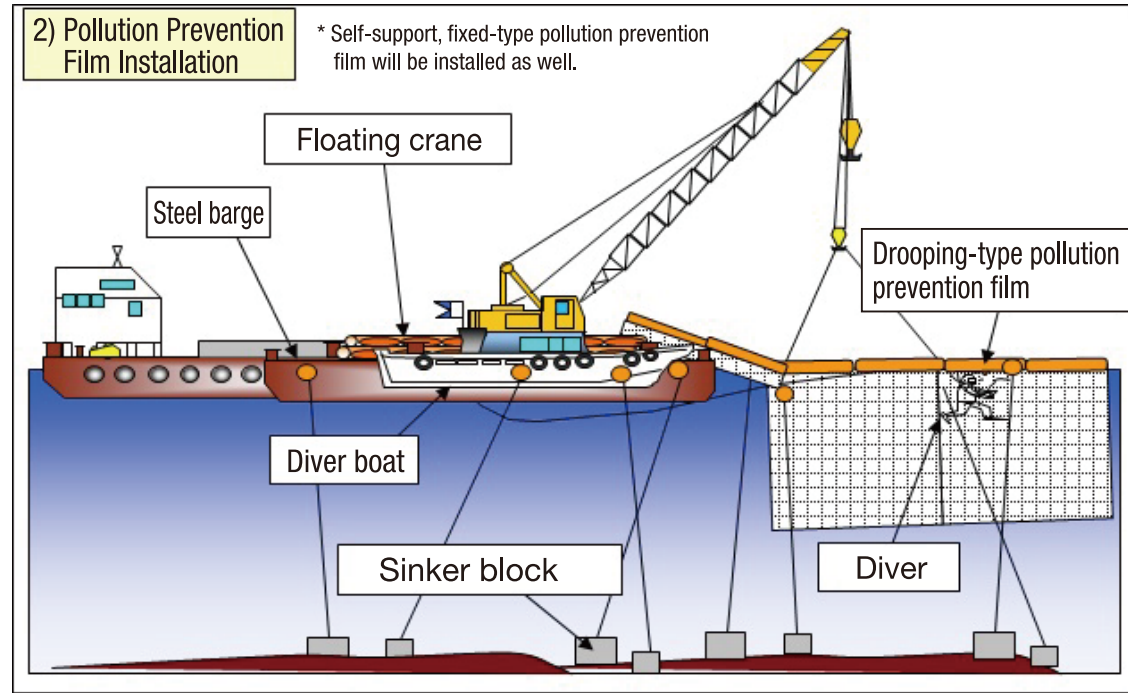
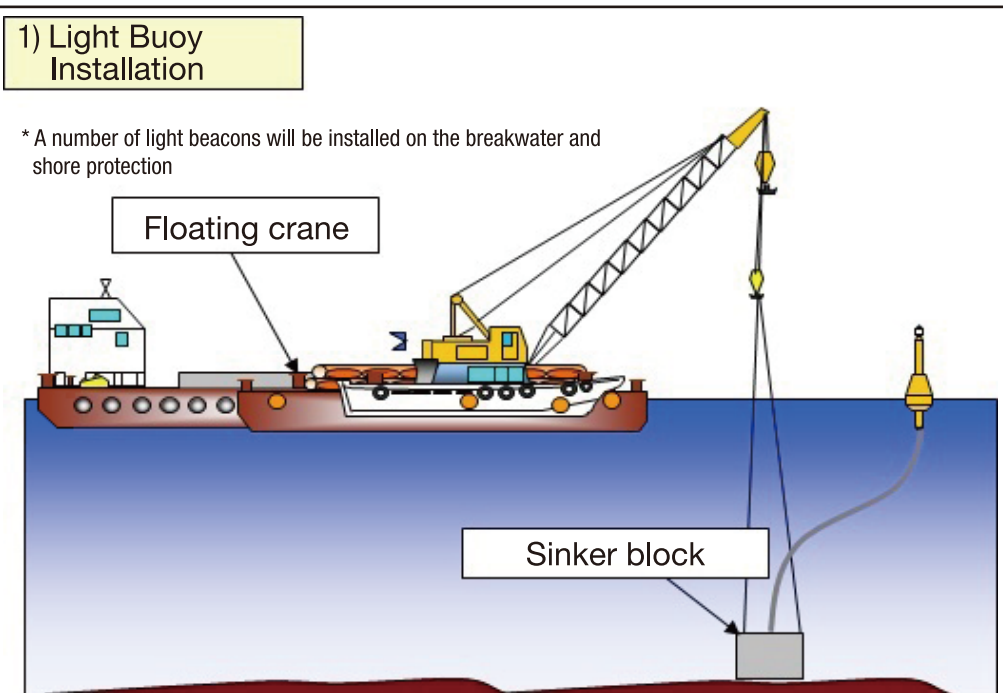


[Pollution Prevention Film Installation]

Basepoint	고베 제6 방파제 등대 북위: 34°40'14.2" 동경: 135°14'43.1"		
Point	Azimuth	Distance	Remarks
Point a	From basepoint 129° 13' 56"	2,282m	
Point b	From point a 59° 20' 13"	1,016m	
Point c	From point b 352° 12' 28"	55m	
Point d	From point c 239° 14' 19"	987m	
Point e	From point d 329° 14' 19"	1,659m	
Point f	From point e 222° 23' 09"	53m	

The work will be conducted in the sea area surrounded by the lines connecting the above points in sequence.

3. Work Overview



4. Safety Measures

- Each workboat will display a light and object specified by the Act for Preventing Collisions at Sea along with the workboat flag 1) representing the Joint Venture.
- One watch boat (International VHF transceiver equipped) hoisting a warning flag 2) will be allocated around the work area to provide information to vessels passing nearby, draw their attention, and work on the maintenance of marine traffic safety.
- The international signal flag (flag A) as shown in 3) will be hoisted during diving work.



1) Workboat flag
(Work area No.4 Goyo Joint Venture Flag)



2) Warning flag



3) International signal flag (flag A)