

NOTICE ON WORK ON MARINE GROUND IMPROVEMENTS OFF ROKKO ISLAND IN SECTION 6 OF KOBE-KU, HANSHIN PORT

Contractors : Penta-Ocean, Aomi, and Ohmoto Specified Construction Joint Venture
Inquiry : Management Office of Navigational Safety Information on Kobe Port Marine Construction Work
[Website: <http://www.kobe-kaibouken.or.jp>]

Tel.: 078-855-2255
Tel.: 078-335-8025

Ordering party : Kobe Port Office of Kinki Regional Development Bureau, Ministry of Land, Infrastructure, Transport and Tourism Tel.: 078-331-6703



The following marine ground improvements with sand compaction pile (SCP) work will be conducted along with check boring in Section 6 of Kobe-ku, Hanshin Port. All vessels passing nearby are requested to give a wide berth and navigate with caution.

1. Work Period and Time

- From August 26, 2019 through March 20, 2020
- Daytime work: From sunrise to sunset

2. Contents of Work

The following two kinds of work will be conducted in the work areas as shown in the map on the right-hand side.

- (1) Marine ground improvements with SCP work
- (2) Check boring

[Work area]

Basepoint	Kobe No. 6 Breakwater Lighthouse 34-40-14.2N 135-14-43.1E		
Point	Azimuth	Distance	Remarks
Point A	From base point 105° 20' 02"	1,283 m	
Point B	From point A 60° 19' 05"	500 m	
Point C	From point B 330° 19' 05"	500 m	
Point D	From point C 240° 19' 05"	500 m	

The work area is the sea area enclosed by the lines connecting point A through D in alphabetical order.

[Range of land improvements (Section 4)]

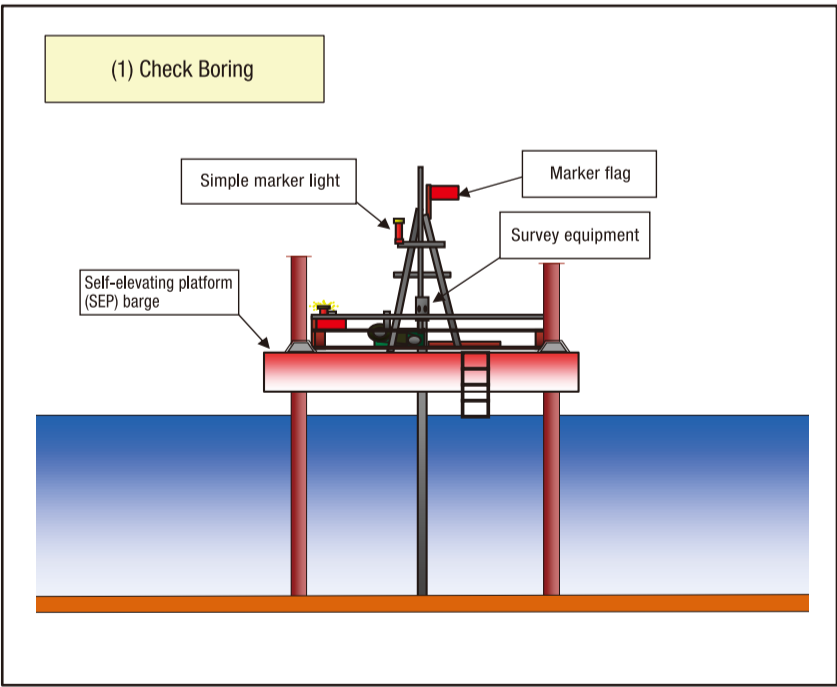
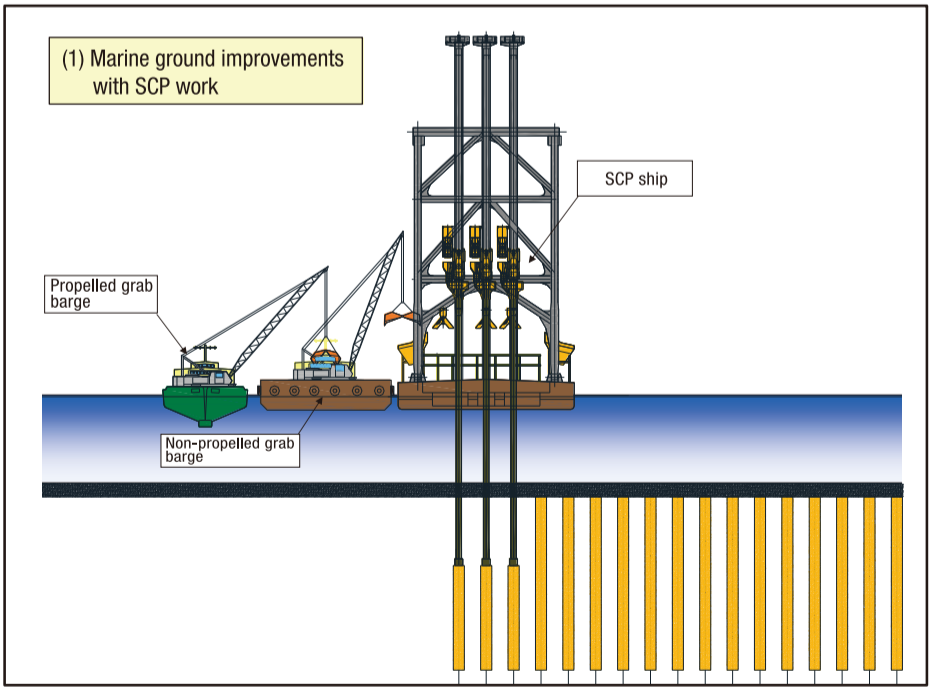
Basepoint	Kobe No. 6 Breakwater Lighthouse 34-40-14.2N 135-14-43.1E		
Point	Azimuth	Distance	Remarks
Point a	From base point 95° 22' 17"	1,427 m	
Point b	From point a 60° 19' 03"	74 m	
Point c	From point b 330° 19' 04"	299 m	
Point d	From point c 262° 15' 07"	79 m	

The work area is the sea area enclosed by the lines connecting point A through D in alphabetical order.

Type of work	2019					2020			Remarks
	Aug.	Sept.	Oct.	Nov.	Dec.	Jan.	Feb.	Mar.	
(1) Marine ground improvements with SCP work									Two groups of ships
(2) Check boring									
Sweeping									



3. Work Overview

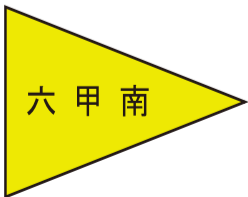


4. Safety Measures

- Each workboat will display a lighting and object specified by the Act for Preventing Collisions at Sea along with the flag representing the Joint Venture 1).
- The material carrier (grab barge) will hoist a streamer indicating the destination of the barge 2).
- One watch boat (equipped with an international VHF transceiver) hoisting a warning flag 3) will be allocated around each work area to draw the attention of vessels passing nearby, provide information to them, and work on the maintenance of marine traffic safety.



(1) Workboat Flag
(Flag of Penta-Ocean representing the Joint Venture for Section 4)



(2) Destination flag



(3) Warning flag